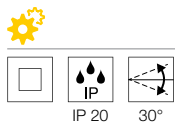
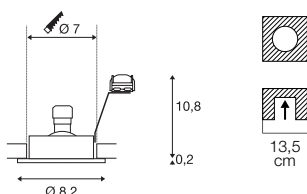


NEW TRIA 68
DL, rond, QPAR51



230 V ~ 50 Hz
Materiaal: aluminium

- Producten worden geleverd met klemveren. Bladveren worden met het product geleverd en kunnen worden verwisseld.
- Materiaaldikte montagevlak: 20 mm

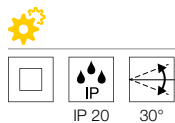
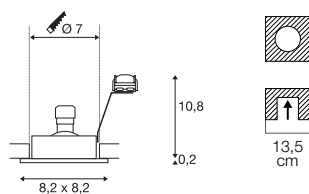
GU10 < 50 W

LED GU10 51 mm | 4 W | 36°
2700 K | 270 lm | EEK=G
4 kWh / 1000 h

Art. nr. 1004972

| Variant | Art. nr. |
|-------------|----------|
| 1xGU10 | |
| ■ zwart | 1001980 |
| 1xGU10 | |
| □ wit | 1001981 |
| 1xGU10 | |
| ■ aluminium | 1001982 |

NEW TRIA 68
DL, rechthoekig, QPAR51



230 V ~ 50 Hz
Materiaal: aluminium

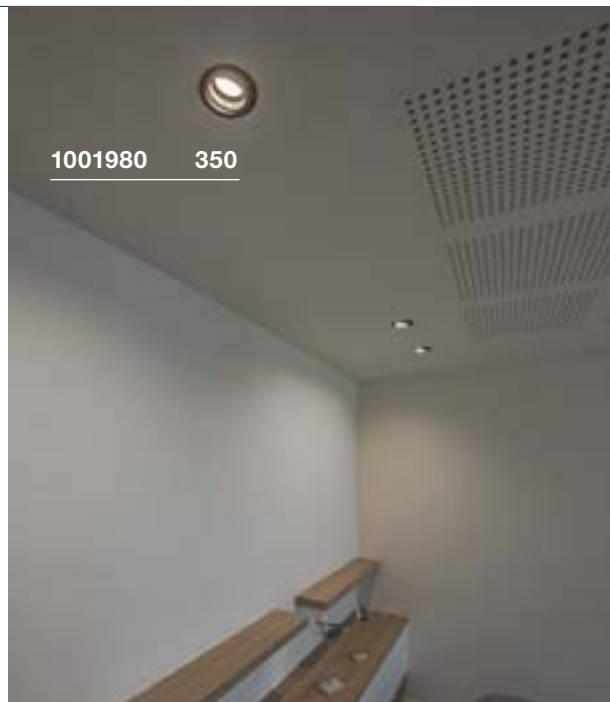
- Producten worden geleverd met klemveren. Bladveren worden met het product geleverd en kunnen worden verwisseld.
- Materiaaldikte montagevlak: 20 mm

GU10 < 50 W

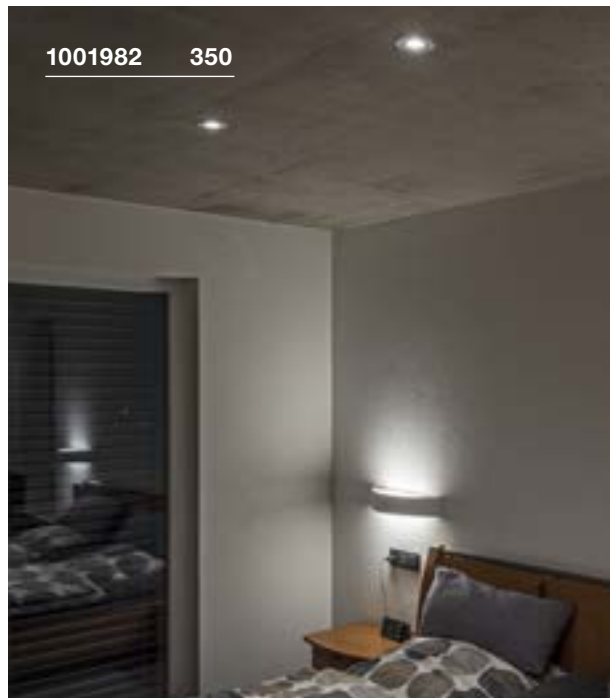
LED GU10 51 mm | 4 W | 36°
3000 K | 280 lm | EEK=F
4 kWh / 1000 h

Art. nr. 1004973

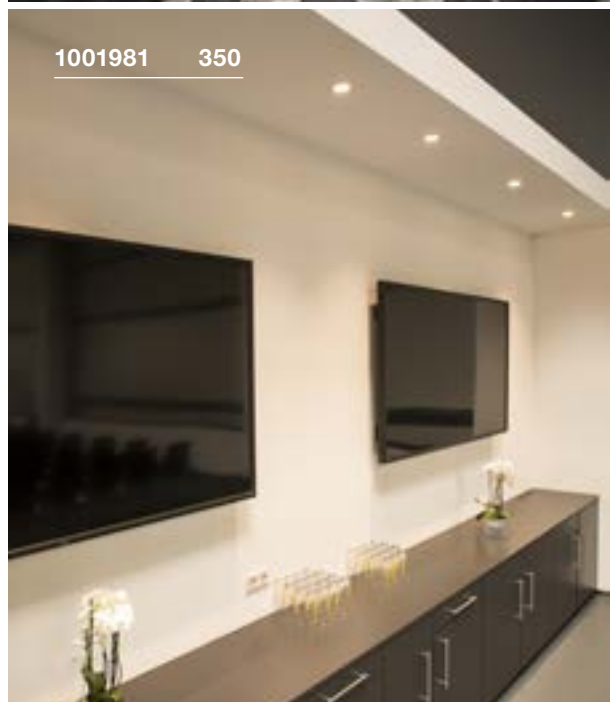
| Variant | Art. nr. |
|-------------|----------|
| 1xGU10 | |
| ■ zwart | 1001994 |
| 1xGU10 | |
| □ wit | 1001995 |
| 1xGU10 | |
| ■ aluminium | 1001996 |



1001980 350



1001982 350



1001981 350